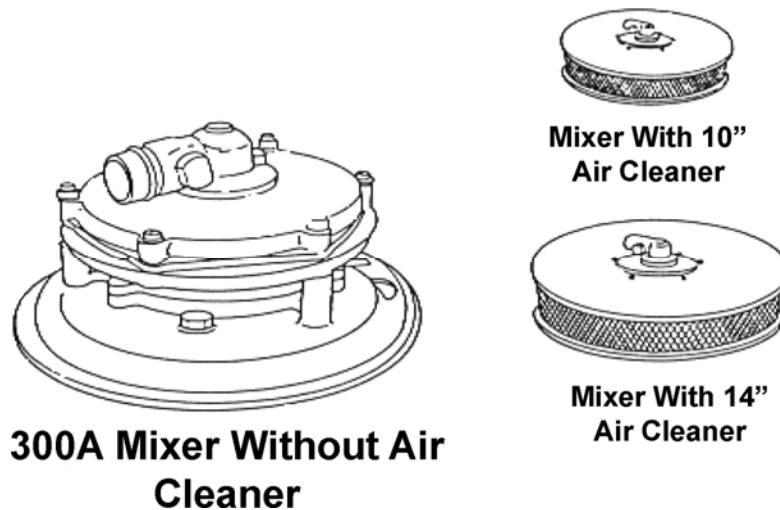


## MODEL 300A CARBURETOR

### CARBURETORS & MIXERS



### MODEL 300A



**300A Mixer Without Air  
Cleaner**

**Mixer With 10"  
Air Cleaner**

**Mixer With 14"  
Air Cleaner**

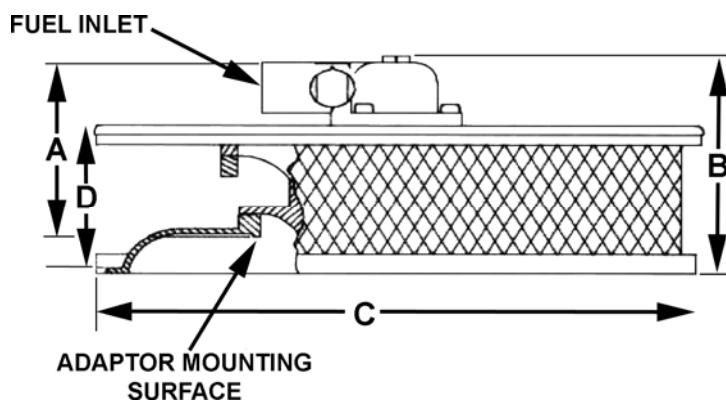
### DESCRIPTION

The Model 300A mixer is a single-diaphragm air valve for applications. It offers a down-draft air inlet that can be used for remote air filtration or open-element type air filters. This unit is available for LPG Vapor and Natural Gas applications with air flow requirements up to 348 CFM (164 L/s) or 432 CFM (204 L/s) depending on the part number. The 300A has numerous adapters to allow the installer to fit the 300A into most under hood vehicle applications.

The Model 300A is also available for feedback applications with the 'FB' designation. The 300A can also be equipped with a cam mechanism to allow the air valve to be raised to its full open position to minimize any restriction in the base vehicle air stream. Optional air cleaner assemblies are also available for engines which require higher CFM air flow.

### SPECIFICATIONS

Fuel Type .....	LPG Vapor, Natural Gas
Operating Temperature Range .....	-40°F to +250°F (-40°C to +121°C)
Mounting Position.....	Vertical
Diaphragm Material.....	Hydrin (Standard), Silicone (Optional)
HP/(kW) (1 & 20).....	217 hp (102.4 kW) @ 348 CFM (164 L/s) w/1.5" Hg manifold
HP/(kW) (50 & 70).....	270 hp (127.4 kW) @ 432 CFM (204 L/s) w/1.5" Hg manifold
Certification .....	UL (AU2317), Inquire for specific ECE approval

**DIMENSIONS**


	A	B	C	D					
MIXER	MOUNTING SURFACE TO TOP OF FUEL INLET	OVERALL HEIGHT	MIXER ONLY OVERALL WIDTH	AIR CLEANER HEIGHT	NO AIR FILTER	10" AIR FILTER	MICRO SWITCH VACCUM VALVE	GAS VALVE	AIR VALVE DIAPHRAGM (B-BLACK HYDRIN S-SILICONE)
CA300A-M-2	88.9 mm (3.5")	104.7 mm (4.125")	206.3 mm (8.125")	69.8 mm (2.75")	x			V2-11	S
CA300A-M-3	88.9 mm (3.5")	104.7 mm (4.125")	206.3 mm (8.125")	69.8 mm (2.75")		x			B
CA300A-M-3-2	88.9 mm (3.5")	104.7 mm (4.125")	206.3 mm (8.125")	69.8 mm (2.75")	x		x		B
CA300A-M-4-2	88.9 mm (3.5")	104.7 mm (4.125")	206.3 mm (8.125")	69.8 mm (2.75")	x		x		S
CA300AM-50-2	88.9 mm (3.5")	104.7 mm (4.125")	206.3 mm (8.125")	69.8 mm (2.75")		x	x		B
CA300AM-50-3	88.9 mm (3.5")	104.7 mm (4.125")	206.3 mm (8.125")	69.8 mm (2.75")	x			V2-39	S
CA300AM-50-4	88.9 mm (3.5")	104.7 mm (4.125")	206.3 mm (8.125")	69.8 mm (2.75")	x		x	V2-39	S
FB300A-M-2	88.9 mm (3.5")	104.7 mm (4.125")	206.3 mm (8.125")	69.8 mm (2.75")	x			V2-49	S
FB300A-M-4-2	88.9 mm (3.5")	104.7 mm (4.125")	206.3 mm (8.125")	69.8 mm (2.75")	x			V2-50	S
FB300AM-50-2	88.9 mm (3.5")	104.7 mm (4.125")	206.3 mm (8.125")	69.8 mm (2.75")	x		x		S
FB300AM-50-4	88.9 mm (3.5")	104.7 mm (4.125")	206.3 mm (8.125")	69.8 mm (2.75")	x		x		B

# MODEL 300A CARBURETOR

## CARBURETORS & MIXERS



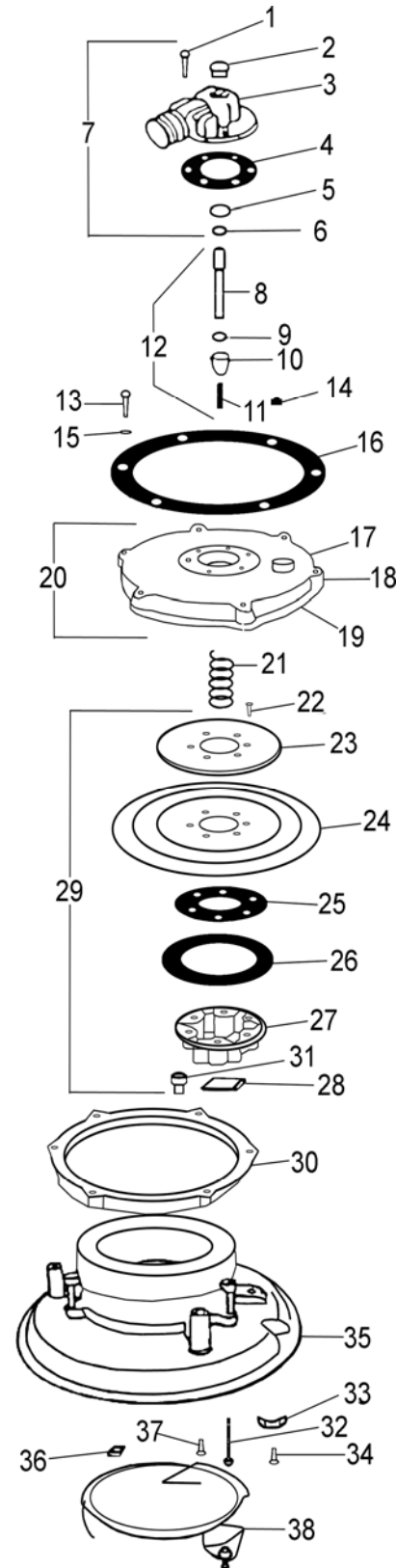
### MODEL 300A 1 AND 50 COMPONENTS

ITEM	PART #	DESCRIPTION
1	S1-3	† Screw, 10-24 x 5/8" SEMS (3)
2	P3-2	Plug, idle adjustment
3	AE1-4	Elbow with power adjustment: E1-4, V2-9, W1-12
4	NSS	*† Gasket, gas elbow
5	R1-9	*† Ring, seal retainer
6	NSS	*† Seal, idle screw
7	BE1-4-1	Elbow ass'y, complete: P3-2, AE1-4, R1-9, S3-3
8	S1-15	Screw, idle adjustment
9	NSS	† Seat, gas valve (CA300A-50 only)
10	V2-11	Valve Gas Mixer, 300A Series
10	V2-49	Valve Gas Mixer FB300A
10	V2-50	Valve Gas Mixer FB300A
11	S2-3	Spring, gas valve
12	AV2-11	† Gas valve ass'y, complete
12	NSS	Gas valve ass'y, complete
13	NSS	† Screw 10-24 x 1" (3)
14	NSS	† Nut, dome 10-24 (3)
15	NSS	† Washer, No.10 light flat (6)
16	NSS	*† Gasket, filter cover
17	NSS	† Rivet, vent valve
18	NSS	† Valve cover vent
19	NSS	Cover, diaphragm (CA300A only)
20	NSS	Cover ass'y., diaphragm with vent valve
20	NSS	† Cover ass'y., diaphragm with vent valve
21	S2-2	† Spring, air valve
22	S1-12	Screw, 8-32 x 5/16" SEMS (6)
23	P2-1	Plate, diaphragm backup
24	NSS	* Diaphragm, air valve
24	D1-1-2	* Diaphragm, air valve, silicone
25	NSS	* Gasket, air valve
26	R1-2	Ring, air valve
27	NSS	Valve, air metering: V1-10, L1-3, B3-24
28	NSS	* Lock, nylon idle adjustment
29	AV1-10	† Air valve ass'y, w/diaphragm
29	AV1-10-2	† Air valve Assy, Silicone, w/diaphragm
30	NSS	Ring, diaphragm support (CA300A only)
31	S1-5	Screw, 1/4"-20 x 5/8" hex head SEMS (3)
32	NSS	† Screw, 10-24 x 1-1/2" SEMS (3)
33	NSS	Clamp, Boden wire
34	NSS	Screw, 10-32 x 5/8" hex head
35	NSS	Base ass'y, complete
36	NSS	Nut, square, 1/4"-20
37	S1-69	Screw, 1/4"x 5/16" (plug)
38	AC2-2	Cam ass'y: C2-2, W1-2, S1-7

**NSS = NOT SERVICED SEPARATELY**

\* Indicates components of minor repair kit.

† Indicates components of major repair kit.



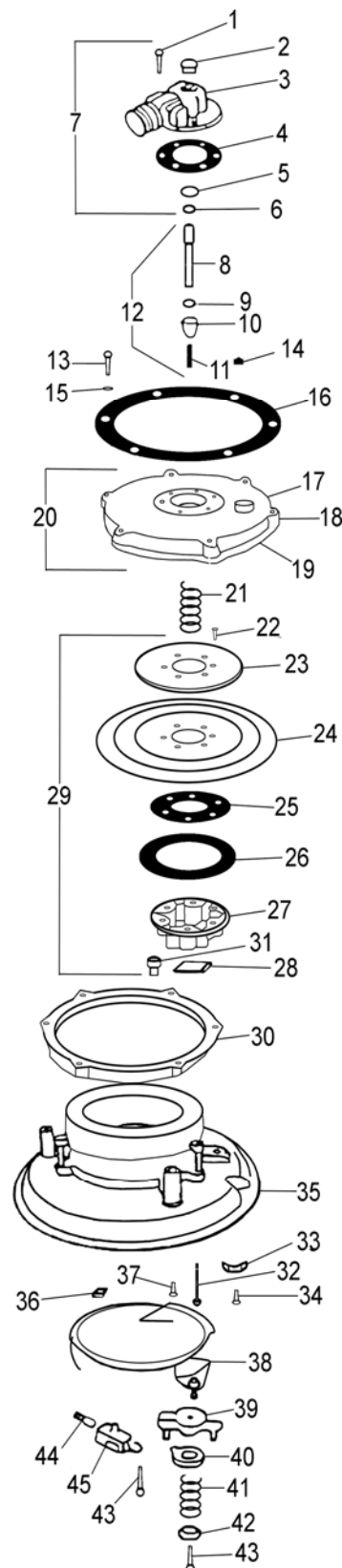
### MODEL 300A 20 AND 70 COMPONENTS

Item #	Part #	Description
1	S1-3	† Screw, 10-24 x 5/8" SEMS (3)
2	P3-2	Plug, idle adjustment
3	AE1-4	Elbow with power adjustment
4	G1-2	*† Gasket, gas elbow
5	R1-9	*† Ring, seal retainer
6	NSS	*† Seal, idle screw
7	BE1-4-1	Elbow ass'y, complete: P3-2, AE1-4, R1-9, S3-3
8	S1-15	Screw, idle adjustment
9	NSS	† Seat, gas valve (CA300A-50 only)
10	V2-49	Valve, gas metering
	V2-50	Valve, gas metering
11	S2-3	Spring, gas valve
12	AV2-11	† Gas valve ass'y, complete
	NSS	Gas valve ass'y, complete
13	NSS	† Screw 10-24 x 1" (3)
14	NSS	† Nut, dome 10-24 (3)
15	NSS	† Washer, No.10 light flat (6)
16	NSS	*† Gasket, filter cover
17	NSS	† Rivet, vent valve
18	NSS	† Valve cover vent
19	NSS	Cover, diaphragm (CA300A only)
20	NSS	Cover ass'y, diaphragm with vent valve
21	S2-2	† Spring, air valve
22	S1-12	Screw, 8-32 x 5/16" SEMS (6)
23	P2-1	Plate, diaphragm backup
24	NSS	* Diaphragm, air valve
	D1-1-2	* Diaphragm, air valve, silicone
25	NSS	* Gasket, air valve
26	R1-2	Ring, air valve
27	NSS	Valve, air metering: V1-10, L1-3, B3-24
28	NSS	* Lock, nylon idle adjustment
29	NSS	AV1-10-1 † Air valve ass'y, complete with diaphragm
	S1-5	AV1-10-2 † Air valve ass'y, complete with diaphragm
30	NSS	Ring, diaphragm support (CA300A only)
31	NSS	Screw, 1/4"-20 x 5/8" hex head SEMS (3)
32	NSS	† Screw, 10-24 x 1-1/2" SEMS (3)
33	NSS	Clamp, Boden wire
34	NSS	Screw, 10-32 x 5/8" hex head
35	S1-69	Base ass'y, complete
36	AC2-2	Nut, square, 1/4"-20
37	NSS	Screw, 1/4"x 5/16" (plug)
38	NSS	Cam ass'y: C2-2, W1-2, S1-7
39	NSS	Body vacuum valve: B1-41, P1-20
40	NSS	Valve, rotary
41	NSS	Spring, vacuum valve
42	NSS	Cap, vacuum valve
43	NSS	Screw, 4-40 x 3/4" (3)
44	NSS	Connector, wire (2)
45	NSS	Switch, gasoline

**NSS = NOT SERVICED SEPARATELY**

\* Indicates components of minor repair kit.

† Indicates components of major repair kit.



# MODEL 300A CARBURETOR

## CARBURETORS & MIXERS



### ASSEMBLIES & ACCESSORIES

#### ADAPTERS

PART #	DESCRIPTION
A1-4	Adapter, CA300A, mixer to 2-5/8" Air Horn, center stud
A1-50-2	Adapter, CA300A
A1-6	Adapter, CA300A, mixer to 3-1/16" Air Horn, center stud
A1-63	Adapter, CA300 Machined
AA1-40	Adapter, CA300 2 5/8" w/ Clamp Nuts
AA1-50-5	Adapter, Assy CA300/CA425
AA3-75	Adapter, CA300A & CA425M
A3-96	Adapter, CA300 Holley 4B
A1-16-1	Adapter, CA300, 5-1/8" Center Stud
A1-16-2	Adapter, CA300, 1/2" Shorter than A1-16-1
A1-54	Adapter, 3-1/8" Air Horn
A1-55	Adapter, 2-5/8" Air Horn
A1-56	Adapter, 2- 5/16" Air Horn
A1-62	Adapter, 5-1/8" Air Horn
AA1-57	Adapter, Ass'y Hood
AA1-67	Adapter, Ass'y 175A to Hose

#### CABLES

PART #	DESCRIPTION
C2-32	Cable, Boden Wire 300A Series
C2-1	Clamp, Boden Cable

#### FILTERS

PART #	DESCRIPTION
F1-1	Filter Element, CA300A, 350 CFM
AF1-11	Air Filter, CA300A
AF1-17-2	Air Filter, 550 CFM
C1-4	Cover, CA300A-1

#### ADAPTERS

PART #	DESCRIPTION
A2-73	Adapt 1/2" Spacer Adapter 5" ID
A1-50-2	Adapter, CA300A

#### MIXERS

PART #	DESCRIPTION
CA300A-M-2	Mixer only, w/O Filter w/ Boden Wire, Silicone
CA300A-M-3	Mixer, w/O Fitting, Filter, Cable,
CA300A-M-3-2	Mixer, Silicone, w/O cable, & Filter Fitting.
CA300A-M-4-2	Mixer w/O C2-32, AC2-2 Silicone
CA300AM-50-2	Mixer only, w/O Filter, w/ AC2-2
CA300AM-50-3	Mixer only, w/O Filter, C2-32
CA300AM-50-4	Mixer Ass'y, w/O Cable & Cam
FB300A-M-2	Mixer Ass'y, w/ FB. Air Valve
FB300A-M-4-2	Feedback Mixer w/ C2-32
FB300AM-50-2	Mixer Ass'y Feedback, w/O Filter
FB300AM-50-4	Mixer Ass'y, w/O Filter, & Cam Cable
FB300AM-50-4TP	Feedback Mix w/Ocbl & Air Fil Tm Res

#### AIR VALVE ASSY

PART #	DESCRIPTION
AV1-10	Valve Ass'y, CA300A
AV1-10-2	Valve Ass'y, CA300A, Silicone
AV2-50	Gas Valve Ass'y, Complete

#### REPAIR KITS

PART #	DESCRIPTION
RK300MA-1/20	Major Repair Kit for Standard or -20 models with Hydrin Diaphragm
RK300MA-1/20-2	Major Repair Kit for Standard or -20 models with Silicone Diaphragm
RK300MA-50/70-2	Major Repair Kit for -50 or -70 models with Silicone Diaphragm
RK300MI-1/20-2	Minor Repair Kit Minor for -20 models with Silicone Diaphragm
RK300MI-50/70-2	Minor Repair Kit for -50 or -70 models with Silicone Diaphragm

#### POWER VALVES

PART #	DESCRIPTION
V2-9	Valve, Power Adjustment

#### GASKETS

PART #	DESCRIPTION
G1-130	Gasket, Flange



## MODEL 300A CARBURETOR

### CARBURETORS & MIXERS